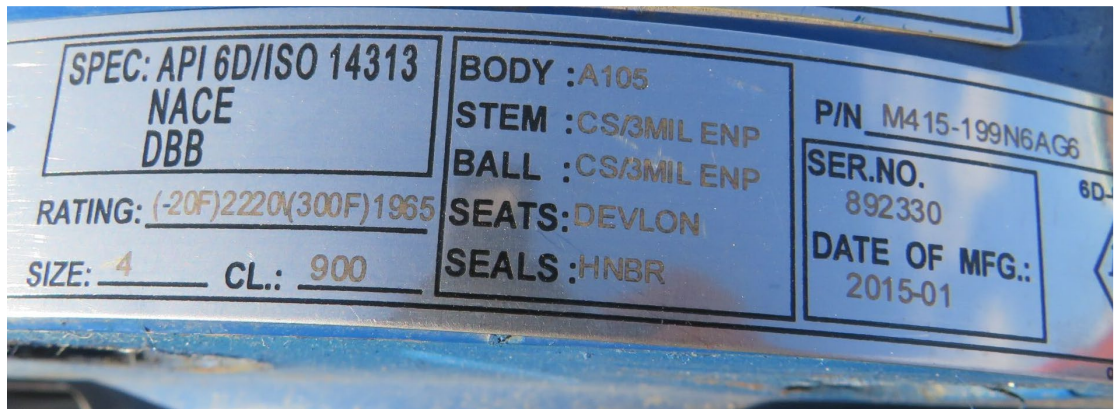
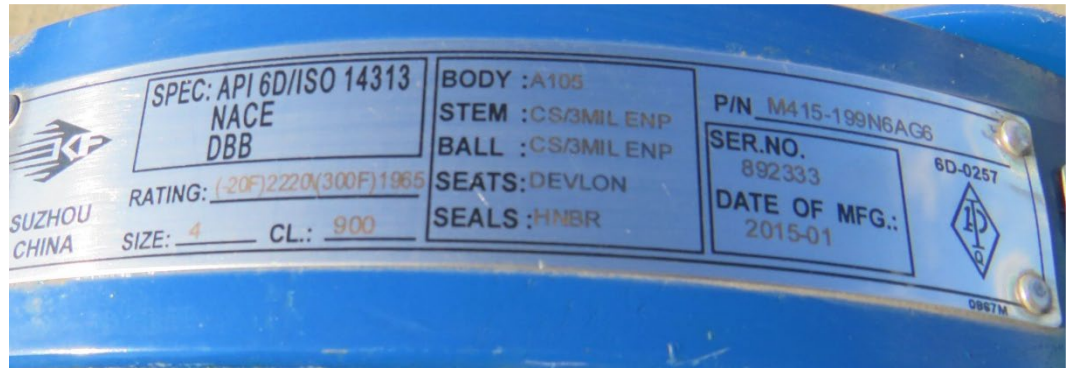
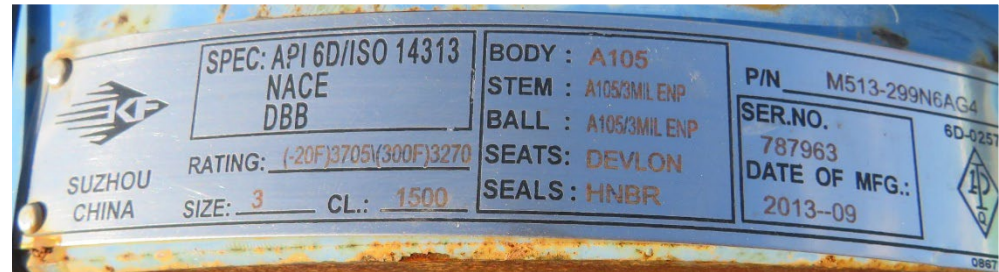


SLE 20-040 Pipeline Valve



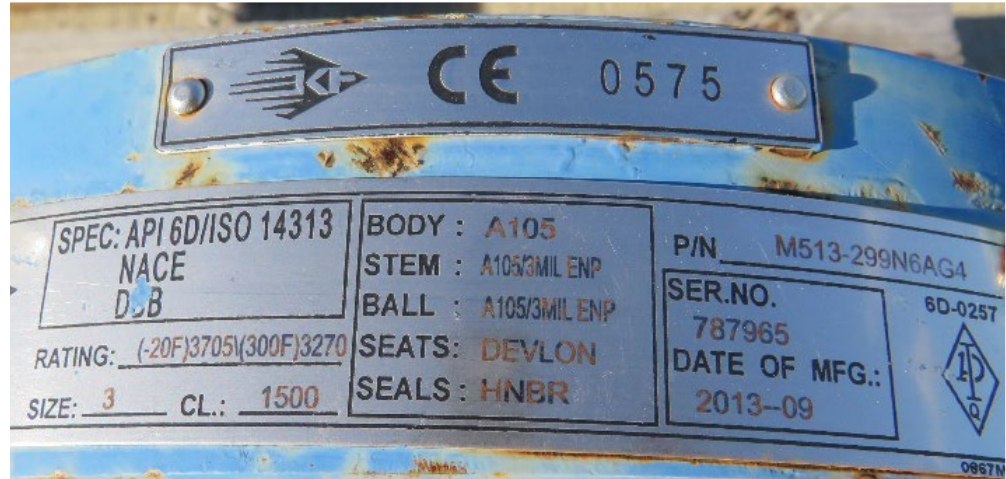
SLE 20-040 Pipeline Valve



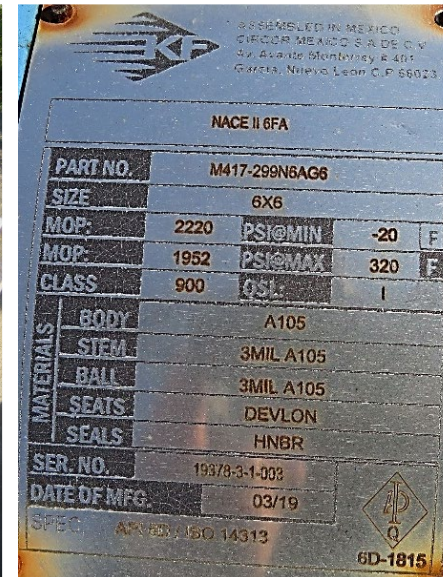
SLE 20-040 Pipeline Valve



SLE 20-040 Pipeline Valve



SLE 20-040 Pipeline Valve



SLE 20-040 Pipeline Valve



ASSEMBLED IN MEXICO
CIRCOR MEXICO S.A. DE C.V.
Av. Avante Monterrey #401
García, Nuevo León C.P. 66023, MX

NACE II 8FA

PART NO.	M417-299N6AG6		
SIZE	6X6		
MOP:	2220	PSI@MIN	-20 F
MOP:	1952	PSI@MAX	320 F
CLASS	900	QSL:	1
MATERIALS	BODY	A105	
	STEM	3MIL A105	
	BALL	3MIL A105	
	SEATS	DEVLON	
	SEALS	HNBR	
SER. NO.	19378-3-1-004		
DATE OF MFG.	03/19		
SPEC.	API 6D / ISO 14313		

6D-1815



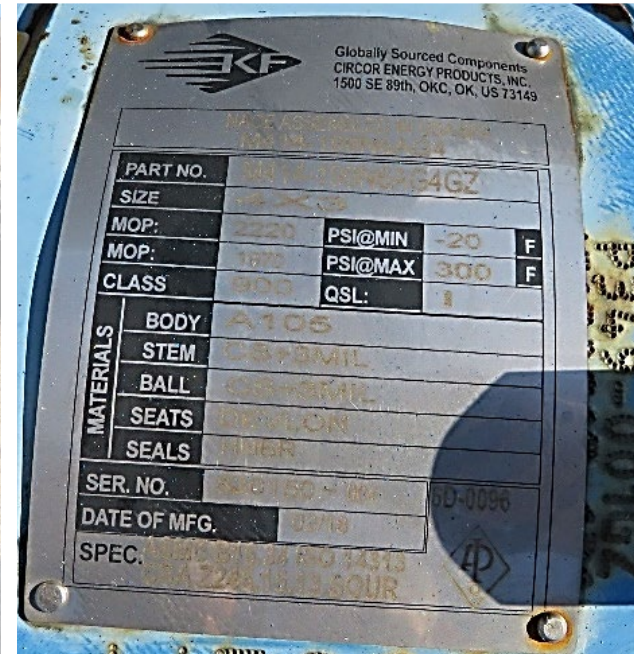
Globally Sourced Components
CIRCOR ENERGY PRODUCTS, INC.
1500 SE 89th, OKC, OK, US 73149

NACE ASSEMBLED IN USA 8FA

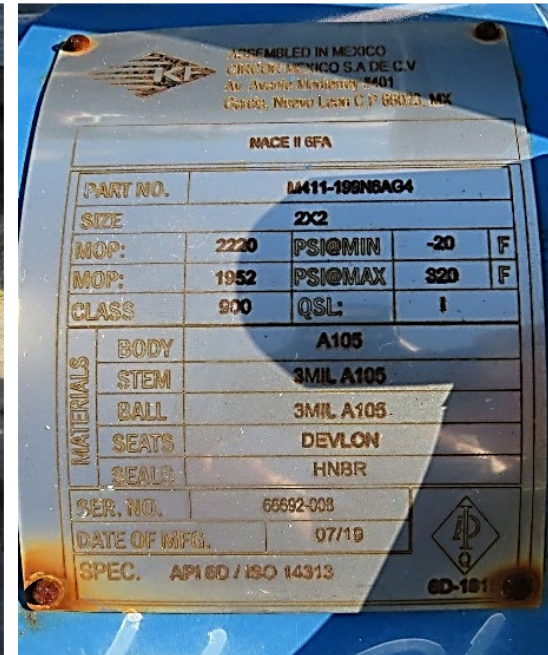
M319-199N6AG6G7

PART NO.	M319-199N6AG6G7		
SIZE	6X6		
MOP:	1450	PSI@MIN	-20 F
MOP:	1315	PSI@MAX	300 F
CLASS	900	QSL:	
MATERIALS	BODY	A105	
	STEM	3MIL A105	
	BALL	A105+3MIL	
	SEATS	DEVLON	
	SEALS	HNBR	
SER. NO.	826125-001		
DATE OF MFG.	11/2/17		
SPEC.	API 6D/ISO 14313 CSAZ245.15.09 SOUR M45C		

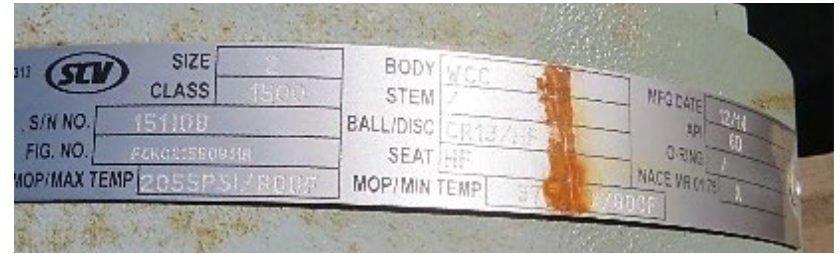
SLE 20-040 Pipeline Valve



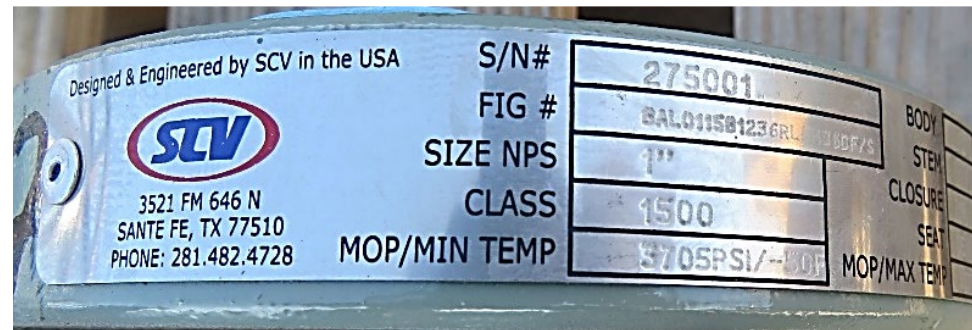
SLE 20-040 Pipeline Valve



SLE 20-040 Pipeline Valve



SLE 20-040 Pipeline Valve



SLE 20-040 Pipeline Valve

